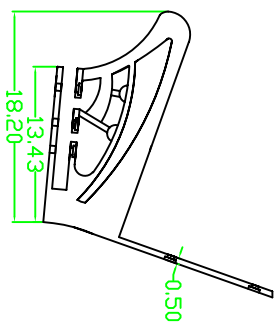


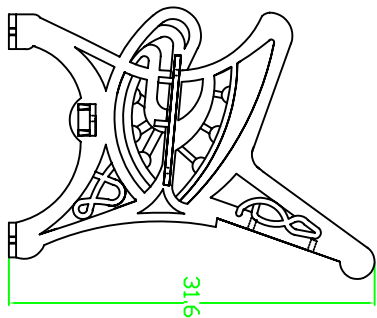
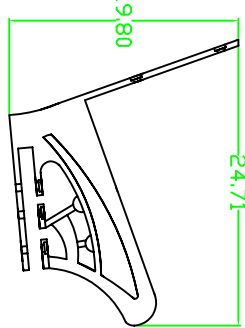
PB200-SU80



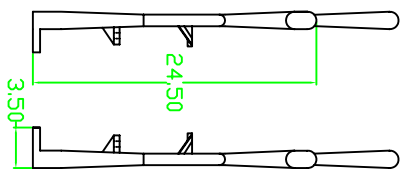
PB200-ARM



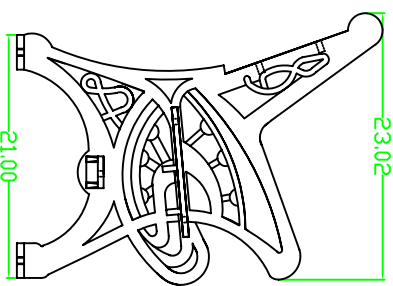
PB200-ARM



PB200-SL



PB200-SR



NOTES:
 *MATERIAL: DUCTILE IRON
 ASTM A536 CLASS 80-55-06

ITA STYLE 80" PARK BENCH
 DETAILS

NOTE, THIS DRAWING SUPERSEDES ALL OTHERS BEFORE THIS DATE

MAXIMUM ALLOWABLE TOLERANCE	
	PLUS MINUS
MATERIAL	
SQUARE	
BAR CENTERS	
HOLE SIZE	
HOLE CENTERS	
OUTSIDE DIMENSION	



SOUTH BAY FOUNDRY
 SITE FURNISHING DIVISION
 9444 ABRAHAM SANTEE, CA 92071, USA.

PHONE(619)956-2780 FAX(619)956-2788

APPROVAL DATE:

DRAWN BY:

WT. 387 LB

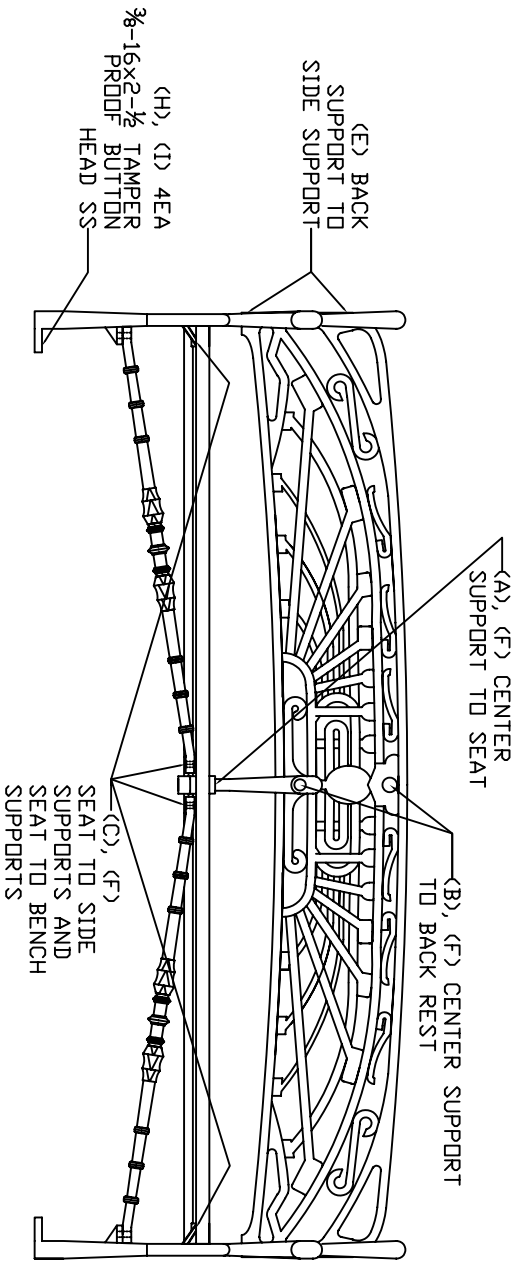
I.D.# PB200

APPROVED BY:

SCALE:

DATE: 5/21/10

SHEET: 1/2



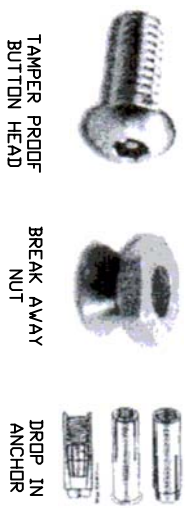
ASSEMBLE ALL HARDWARE WITH LOCKTITE

ASSEMBLY REQUIRED TOOLS
 1 EA TAMPER RESISTANT SHORT ARM HEX KEY
 1 EA ADJUSTABLE CRESENT WRENCH

INSTALLATION REQUIRED TOOLS
 1 EA TAMPER RESISTANT SHORT ARM KEY
 DRILL AND MASONRY DRILL BIT 1/2"

- ASSEMBLY HARDWARE LIST**
- (A) 3 EA 1/2-13x2-3/4 CARRIAGE BOLTS
 - (B) 2 EA 1/2-13x2-1/4 CARRIAGE BOLTS
 - (C) 6 EA 1/2-13x2 CARRIAGE BOLTS
 - (D) 2 EA 3/8-16x1-1/2 TAMPER PROOF BUTTON HEAD SS
 - (E) 4 EA 3/8-16x1 TAMPER PROOF BUTTON BEAD SS
 - (F) 11 EA 1/2-13 BREAK AWAY NUTS
 - (G) 2 EA 3/8-16 BREAK AWAY NUTS

- INSTALLATION HARDWARE LIST**
- (H) 4 EA 3/8-16x1-1/2 TAMPER PROOF BUTTON HEAD SS
 - (I) 4 EA #6206 3/8 POWER RAWL DROP IN ANCHOR



ITA STYLE 80" PARK BENCH ASSEMBLY

NOTE, THIS DRAWING SUPERSEDES ALL OTHERS BEFORE THIS DATE

MAXIMUM ALLOWABLE TOLERANCE	
PLUS	MINUS
MATERIAL	
SQUARE	
BAR CENTERS	
HOLE SIZE	
HOLE CENTERS	
OUTSIDE DIMENSION	



SOUTH BAY FOUNDRY
 SITE FURNISHING DIVISION
 9444 ABRAHAM SANTEE, CA 92071, USA.

PHONE(619)956-2780 FAX(619)956-2788

APPROVAL DATE: _____ DRAWN BY: _____ W.T. 387 LB I.D.# PB200

APPROVED BY: _____ SCALE: _____ DATE: 5/21/10 SHEET: 2/2